



**elliotleigh**  
Guaranteed Rents

# CORPORATE CASE STUDY



## AT A GLANCE

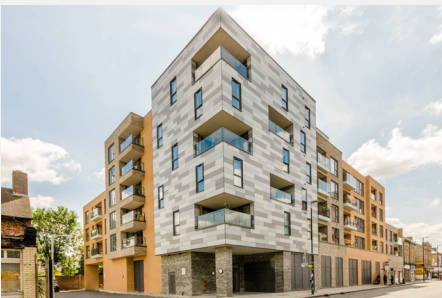
**Devons Wharf, Bow**  
67 Apartments



**Richborough Court, Brentwood**  
12 Apartments



**Sovereign Court, Sutton**  
30 Apartments



As landlords overseeing a diverse portfolio comprising more than 100 properties located in London and its surrounding areas, our decision to entrust Elliot Leigh with the holistic management of our assets over the past decade has proven to be both astute and rewarding. Throughout this extended partnership, we have consistently observed and experienced a remarkable level of professionalism, efficiency, and dedication to excellence in all aspects of their services.

One of the standout qualities of Elliot Leigh is their exemplary ability to navigate the intricacies of property management. From ensuring timely rent payments to the adept oversight of our diverse range of properties, their commitment to excellence has been unwavering. Their responsiveness to queries and the prompt resolution of maintenance issues, facilitated by their in-house maintenance team, have consistently reinforced our confidence in their capabilities.

In an industry characterized by its ever-changing landscape of rules, regulations, and legislation governing tenants and landlords, Elliot Leigh has proven time and again to be at the forefront of industry knowledge. Their commitment to staying well-informed and proactive in adapting to these changes ensures a seamless and compliant management approach.

The peace of mind that comes with Elliot Leigh managing our extensive portfolio is truly invaluable. It allows us to relax, secure in the knowledge that every aspect of property management is being expertly and diligently taken care of. We wholeheartedly endorse their services and cannot speak highly enough of their dedication and proficiency in property management.

**Alan Perry**  
Managing Director  
Blueprint Properties

